



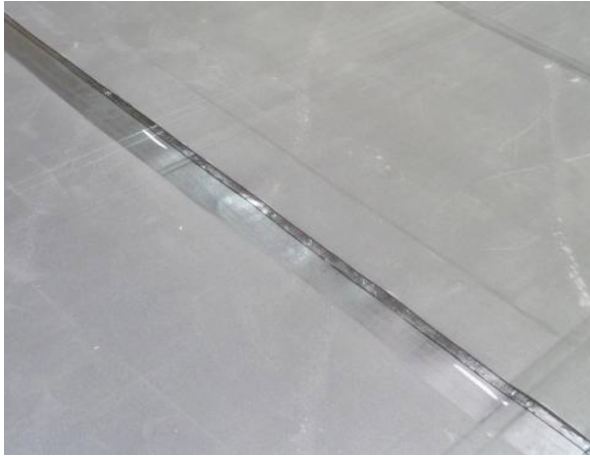
## **Firestone RubberGard™ EPDM Installation Guidelines**

# **Seaming on Extensive Green Roofs**

**(FLL/EN 13948 approved)**



RG\_LIT\_TGL\_07-2013\_EN\_00015



Make a standard seam with QuickSeam Splice Tape and QuickPrime Plus as per Firestone Technical Guidelines.



On top of the finished QuickSeam Splice Tape seam, prepare the seaming area with QuickPrime Plus.



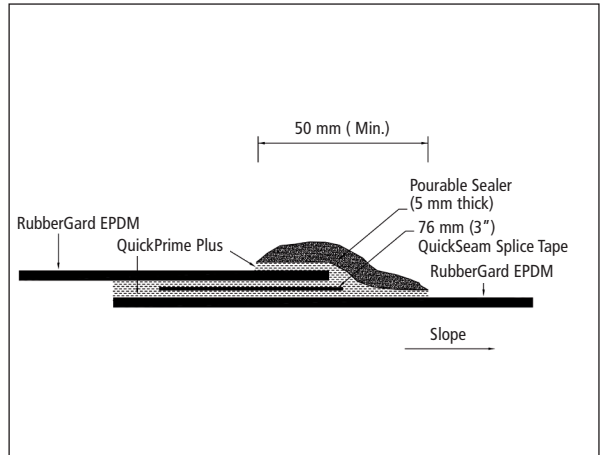
According to FLL/EN 13948 testing, the field-fabricated seams of a Firestone RubberGard EPDM roofing system for extensive green roofs must be covered with Pourable Sealer S-10. This product is a 2-component sealer.



Pour part B in part A and mix thoroughly using a drill with a mixing blade. Mix until the material is uniformly black in colour. Pourable Sealer should be used within 30 minutes after mixing.



Carefully pour the mixed Pourable Sealant centrally over the seam. Coverage rate: app. 20-25 lin.m per gallon.



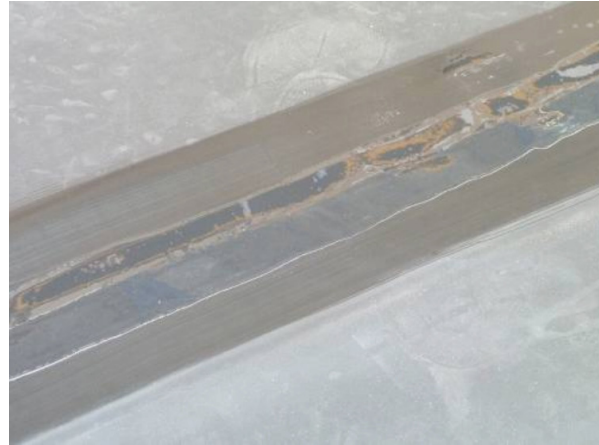
The Pourable Sealer must be spread equally and centralized over the seam edge ensuring a min. width of 50 mm and a min. thickness of 5 mm in the center, above the exposing tape.





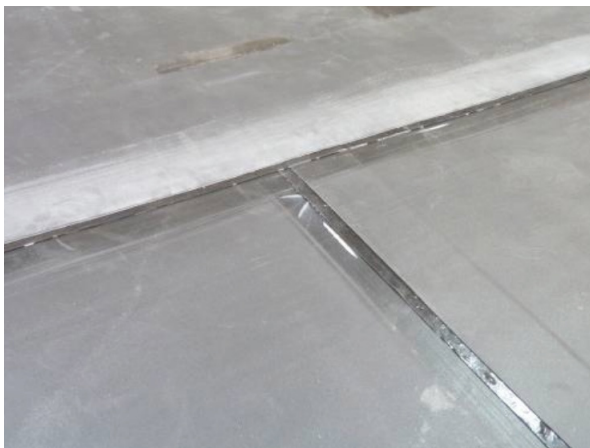


A specially designed tool can be used to facilitate the installation.

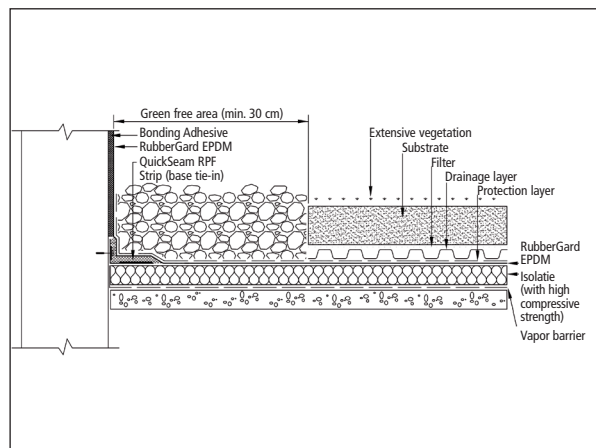


This way a coverage of approx. 20-25 lin.m per gallon of Pourable Sealer may be achieved.

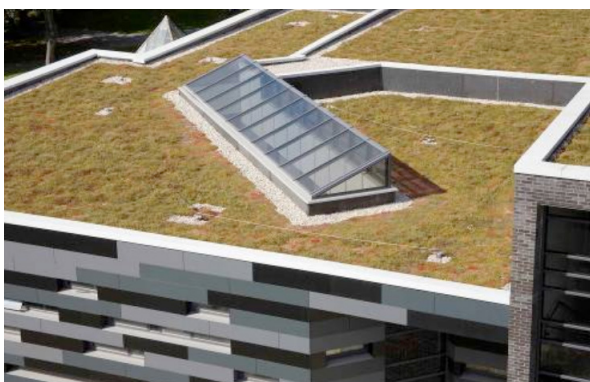
## REMARKS!



Note that **T-joints don't need to be covered with a QuickSeam FormFlash patch**, as the Pourable Sealer will close the capillary. If a QuickSeam FormFlash patch is installed, its entire surface needs to be covered with Pourable Sealer as well.



Pourable Sealer must be installed on horizontal seams only (up to the QS FormFlash angle-change patch). At roof perimeters and around details a **green-free zone** (min. 30 cm) should be maintained using e.g. rounded gravel.



Prior to the installation of the extensive green roof, we strongly recommend performing a water test of the EPDM Roofing System. **Install the green roof as soon as the waterproofing installation is completed.**

Please note that the Pourable Sealer may begin to crack when exposed to sunlight for too long.



Extensive green roof systems only require basic maintenance, such as periodic removal of undesirable plants (weeds etc) and removal of any leaves or debris which could cause blockage of gutters and drains.

Notify the building owner to establish a **periodic maintenance**.

